

US-6



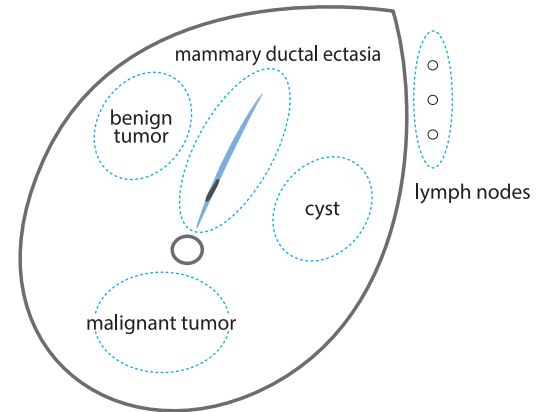
Breast Ultrasound Examination Phantom "BREAST FAN"

Unique phantom for basic breast ultrasound examination

Simulated targets with different echogenicities are embedded in the phantom's mammary gland

Product Supervision

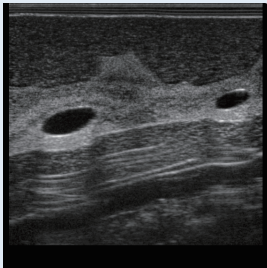
Tokiko Endo, MD, PhD
 Director of Department of Advanced Diagnosis,
 Clinical Research Center,
 National Hospital Organization Nagoya Medical Center
 Director of Department of Radiology,
 National Hospital Organization Nagoya Medical Center

**FEATURES**

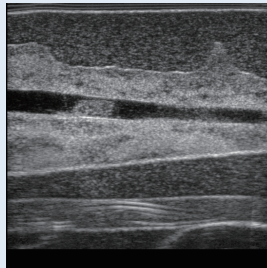
- 1 | State-of-the-art breast ultrasound phantom with anatomy
- 2 | Skills required for ultrasound breast screening can be greatly advanced with practice
- 3 | Excellent ultrasound image quality

SKILLS

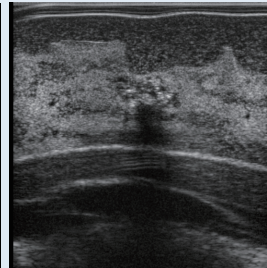
- | Systematic full breast scanning
- | Visualization of key anatomical landmarks
- | Tracking of galactophore
- | Visualization and differentiation of typical pathologies
- | Localization and measurement of cysts and tumor

IMAGES

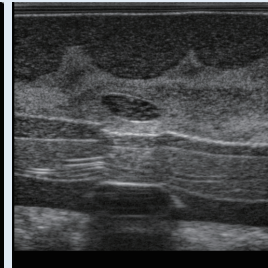
Cyst



Mammary ductal ectasia



Malignant tumor



Benign tumor

ANATOMY

- | subcutaneous adipose
- | mammary gland
- | galactophore
- | cooper's ligament
- | retromammary adipose
- | costae
- | clavicle
- | pectoralis major
- | lung
- | lymph nodes at axilla

DESCRIPTIONS**SPECIFICATIONS**

Size: W26 x D38 x H11 cm
 W10.2 x D15 x H4.3 inch

Weight: 7kg / 15.4lbs

MATERIALS

Polyurethane elastomer
 Latex free

RECOMMENDED DEVICES

-

SET INCLUDES

- 1 breast phantom
- 1 talcum powder
- 1 storage case
- 1 tutorial manual (DVD)
- 1 instruction manual

REPLACEMENT PARTS

-

* Ultrasound scanner is not included.