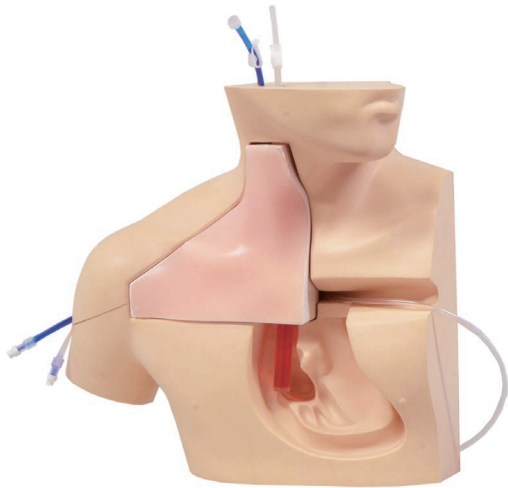


M93C

CVC Insertion Simulator III

CVC III facilitates a sequence of uninterrupted simulation experience for specialist training

From aseptic field preparation to final catheter placement



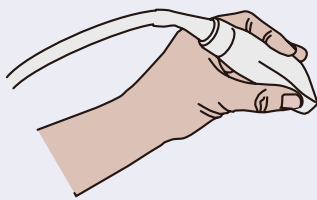
FEATURES

- 1 | Insertion practice is repeatable to obtain the best technique for patient safety.
- 2 | Both landmark guided insertion and ultrasound guided techniques can be practiced.
- 3 | The frictionless tissue-like simulation pad to facilitate a realistic sensation of the CVC placement.

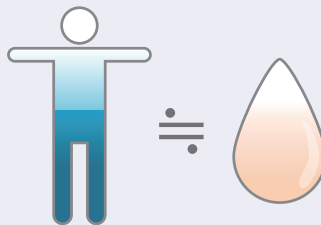
SKILLS

- Take complete steps to a successful CVC insertion
- | Perform hand hygiene practices and prepare aseptic field
 - | Decide on insertion site via ultrasound guidance or observation and palpation of landmarks
 - | Insertion under ultrasound guidance or via landmark technique
 - | Confirm flashback
 - | Advance guidewire and sheath
 - | Insert catheter

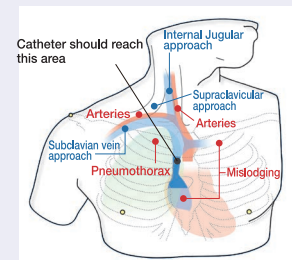
KEY FEATURES



Ultrasound compatible



Pad material simulates features of human tissue



Anatomically accurate features including 3 insertion sites and rib cage

DESCRIPTIONS

SPECIFICATIONS

Size: W40 x D20 x H 34 cm
W15.7 x D8 x H13.5 inch

SET INCLUDES

- | | |
|-------------------------------------|---|
| 1 male upper torso manikin | 2 vein tubes (blue): 2 type |
| 2 CVC placement pads | 2 vein pipes |
| 1 skin for cannulation training | 1 pulsation unit (for landmark technique) |
| 1 transparent anatomical block | 1 irrigation bottle (for UG technique) |
| 2 artery tube (transparent): 2 type | 1 plastic jar |

MATERIALS

Soft resin, hydrogel, hard resin
Latex free

- | |
|--|
| 1 sample needle |
| 2 syringes (2.5ml, 50ml) |
| 1 introductory ultrasound training block |
- REAL VESSELS

REPLACEMENT PARTS

- | | | |
|-----------|---|-------------|
| 11347-210 | 2 introductory ultrasound training blocks | REAL VESSEL |
| 11347-240 | 2 CVC placement pads | |
| 11347-260 | 1 pulsation unit | |
| 11347-320 | 1 irrigation bottle | |

Ultrasound scanner and needles are not included.