

Ultrasound Guided Thoracentesis Simulator features strap-on (wearable) puncture units that facilitate hybrid training session with patients. There are two types of puncture units: for mid-scapular line access and for mid-axillary line access. Both units include ribs, soft tissue, pleura, lung and diaphragm. The ribs can be palpated from the surface to determine site for needle insertion. Volume of the effusion can be controlled.

Features

1. Excellent ultrasound image
2. Ribs can be palpated
3. Strap-on puncture units to learn patient positioning and face-to-face communication
4. Body torso for one-man training
5. Two sites for access : right mid-scapular line and left mid-axillary line
6. Volume of pleural effusion can be controlled to set different levels of challenges

● Excellent ultrasound image



Anatomy includes: ribs, pleura, soft tissue and diaphragm

● Ribs can be palpated



Mid-axillary line unit: 6-9th rib
Mid-scapular line units: 8-11th rib

● Successful access: aspiration of fluid



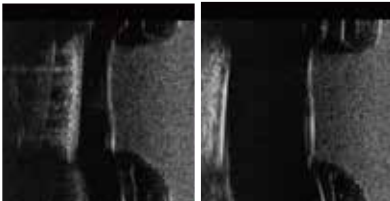
Realistic needle-tip resistance and needle-penetrating feeling

● Strap-on puncture units



Strap-on puncture units to learn patient positioning and face-to-face communication

● Simulation of risks of complications. Confirmation of puncture direction.



Volume of pleural effusion can be controlled to set different levels of challenges



Explanation model to facilitate anatomical understanding

● Size

manikin size: 15x210x19 (in)
size of puncture unit: 6x3x8 (in)

● Set Includes

- 1 upper torso manikin
- 1 mid-scapular line unit
- 1 mid-axillary line unit
- 1 pillow
- 1 explanation model
- 1 set of accessories
 - 1 plastic jar
 - 1 tube with three-way stopcock
 - 1 50ml syringe
 - 1 funnel
- 1 instruction manual



● Replacement Parts

- 11383-010 (a pair)
mid-axillary line unit puncture pad
- 11383-020 (a pair)
mid-scapular line unit puncture pad
- 11383-030 (a pair)
replacement lung

● Product Supervision

Takahiro Amano, M.D.
Vice-Dean, Postgraduate School
Professor and Director, Center of Postgraduate
Medical Education
International University of Health and Welfare
Director, Sanno Medical Center

Tetsuya Okunaka,
Professor, International University of Health and
Welfare
Assistant, Respiratory Disease Center, Sanno
Hospital

Taiji Nagata, M.D., PhD
Professor and Chief Respiratory Disease Center,
Sanno Hospital, International University of Health
and Welfare

Tetsuo Sato, M.D., PhD
Professor and Director,
Center for Respiratory Diseases,
Mita Hospital, International University of Health
and Welfare

Kyoko Arai, RN, PHN, PhD
Associate Professor,
International University of Health and Welfare
Graduate School